

W392

16/12/09

DUST COLLECTOR

DC-1

INSTRUCTION MANUAL



Dear customer,

we wish you a pleasant and successful working experience with your new machine.

We recommend

that you read through the entire operating instructions before putting into operation.

Read the instructions manual:

Before installing, putting into use or undertaking work on the compressor, read the instructions manual carefully.

Dangerous Voltage

Caution! Switch off current entry on compressor before each contact.

Danger due to hot surfaces

Caution! There are some parts of the compressor that can get very hot.

- ◆ These operating instructions are to assist you in getting to know your machine. The operating instructions contain important notes on how you work with the machine safely, expertly, and economically, and how you can avoid hazards, save repair costs, reduce downtime and increase the reliability and service life of the machine.
- ◆ In addition to the safety requirements contained in these operating instructions, you must be careful to observe your country's applicable regulations.
- ◆ The operating instructions must always be near the machine.
- ◆ Put them in a plastic folder to protect them from dirt and humidity.
- ◆ They must be read by every operator before beginning work and observed conscientiously.
- ◆ Only persons who have been trained in the use of the machine and have been informed of the various dangers may work with the machine.
- ◆ The required minimum age must be observed.
- ◆ In addition to the safety requirements contained in these operating instructions and your country's applicable regulations, you should observe the generally recognized technical rules concerning the operation of woodworking machines.

General Notes

- ◆ After unpacking, check all parts for any transport damage. Inform the supplier immediately of any faults.
- ◆ Later complaints cannot be considered.
- ◆ Make sure the delivery is complete.
- ◆ Before putting into operation, familiarize yourself with the machine by carefully reading these instructions.

Scope of delivery

Exhaust system	
Exhaust hose	∅ 100 mm
Hose coupling	∅ 100 mm
2 hose clamps	∅ 100 mm
Filter cartridge	
Operating instructions	

Specifications	
Dimensions d x h mm	360x670
Exhaust connection d mm	100
Hose length mm	1500
Air flow m ³ /min:	3.05
Suction Pa	2500
Weight kg:	10
Container l	50L

Drive	
Electric motor	240V/50Hz
Motor speed (rpm)	20000
Rated input (W)	1100
Noise level at idle dB(A)	85

Components

1. Motor casing
2. Shavings container
3. On/off switch
4. Locking strap
5. Exhaust hose
6. Hose clamps
7. Hose coupling

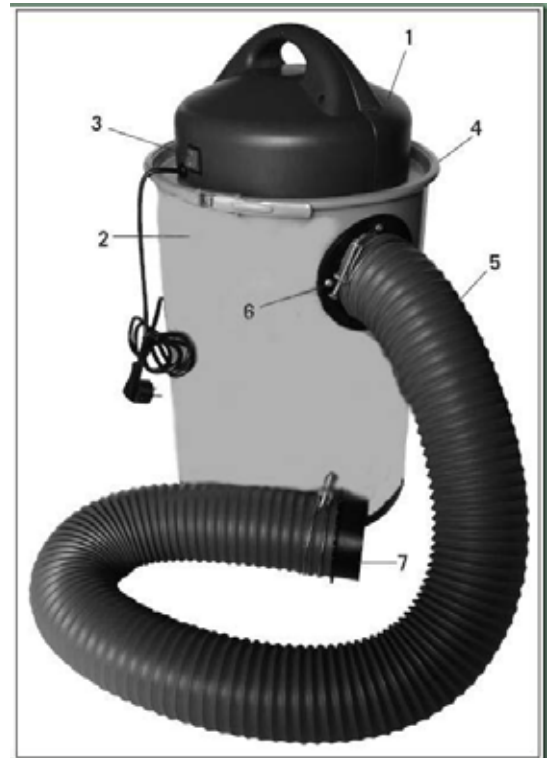


Fig. 1

General Information

- ◆ Check all parts after unpacking for possible transportation damages.
- ◆ Check if all parts are delivered.
- ◆ Use the operating instructions to make yourself be familiar with the device before use.
- ◆ Use only original parts as accessories as well as wear and tear elements and spare parts. You can get spare parts at your dealer.

Safety Instructions

- ◆ Pass these safety instructions on to all persons working with the machine.
- ◆ Observe all safety instructions and warnings on the machine.
- ◆ Keep all safety instructions and warning labels on the machine complete and in a legible condition.
- ◆ Check the power cords. Do not use fault power cords.
- ◆ Make sure the machine is set up on firm ground and stands level and stable.
- ◆ Protect the machine from getting wet.

- ◆ Keep children away from the machine when it is connected to the power supply.
- ◆ Installation, repairs and maintenance work of the electrical installation may only be carried out by qualified personnel.
- ◆ Switch machine off before correcting faults. Disconnect the mains plug.
- ◆ Maintenance work or replacing the bag, the filter, or the hose must only be conducted with the mains plug disconnected from the power supply.
- ◆ In explosion risk areas only “explosion-proof machines” may be used.
- ◆ Check the proper function of the machine before each use.
- ◆ Switch the motor off when leaving the working area. Disconnect the mains plug.
- ◆ Before relocating the machine, even over short distances, disconnect it from all external power sources! Reconnect the machine properly to the mains supply before putting it to operation again!

Intended Use

- ◆ This machine complies with the current CE machinery directive.
- ◆ The machine was designed according to the state of the art and safety standards. Nevertheless, the use of it might pose a hazard to health or life of the operator or others, or might have adverse effects on the machine or other material assets.
- ◆ Use the machine only in good technical condition, in accordance with the intended use, bearing in mind the safety and possible dangers, and in adherence to the operating instructions. In particular, faults that might cause an unsafe condition must be repaired immediately!
- ◆ The exhaust system is intended for removing wood shavings and associated wood dust.
- ◆ This exhaust system is powered by a brush type motor which is not a continuously rated cycle. Therefore it is NOT designed for industrial applications.
- ◆ Regularly inspect the filter for damage. Replace damaged filters! Check tightness of the casing and of the sealing of filter and shavings bag regularly.
- ◆ When you use the cleaning nozzle, make sure you do not suck in objects such as screws, nails, or pieces of plastic or wood.
- ◆ The machine may only be used with original parts and original accessories

from the manufacturer.

- ◆ Only for collecting shavings (not dust).
- ◆ The manufacture 's safety, working, and maintenance instructions, as well as the dimensions stated in the technical specifications, must be observed.
- ◆ The applicable accident prevention regulations and other generally accepted rules concerning safety must be obeyed.
- ◆ The machine may only be operated, serviced, or repaired by persons familiar with it and aware of the risks. Arbitrary modifications of the machine exclude any liability of the manufacturer for damage arising from this.
- ◆ The machine may only be used with original accessories from the manufacturer.

Remaining hazards

- ◆ The machine was designed according to the state of the art and accepted safety standards. However, remaining risks might occur during work.
- ◆ There is a health risk from wood dust or wood shavings. It is absolutely essential to wear personal protective equipment such as eye protection and a dust mask.
- ◆ There is the possibility of inhaling dust when you close or replace the Filter bag. Ignoring the operating instructions concerning the disposal (e.g. the prescribed use of dust masks P2) might lead to the inhalation of dust.
- ◆ There is a health risk due to high noise levels. During operation the permitted noise level will be exceeded. It is absolutely essential to wear personal protection equipment such as hearing protection.
- ◆ There is an electrical hazard when improper electrical connecting cables are being used.
- ◆ Furthermore there might be non-obvious residual risks despite all precautions.
- ◆ Remaining risks can be minimized by observing the Safety Instructions and the Intended Use as well as the operating instruction in their entirety.

Assembly

For packaging reasons your machine is not entirely assembled. Take the exhaust system out of the packing. Release the locking strap and remove the motor casing.

Fig. 2

In the container you will find all the components of the exhaust system. Take all parts out and check for completeness.

- 1、 Filter cartridge
- 2、 Filter bag
- 3、 Exhaust hose
- 4、 2 hose clamps
- 5、 Hose coupling d 100 mm

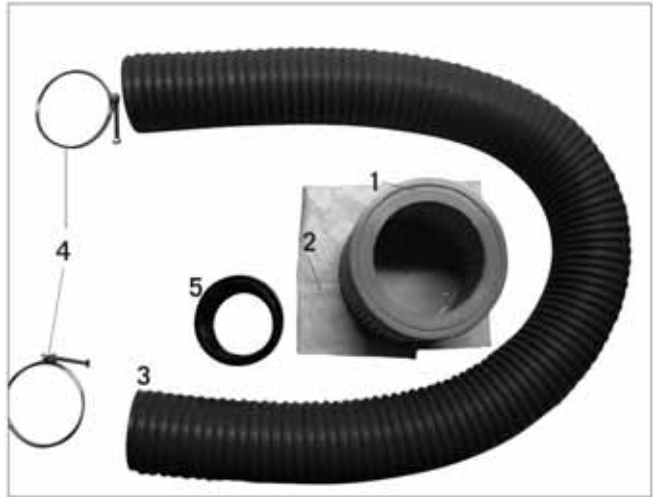


Fig. 2

Fig. 3

Mount the filter cartridge with filter bag.

Place Filter cartridge 1 into Filter bag 2.

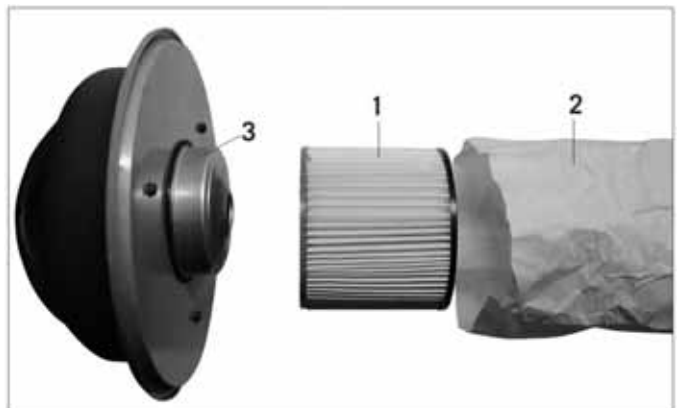


Fig. 3

Fig. 4

Push any overhang into the filter cartridge.



Fig. 4

Fig. 5

Now plug the Filter cartridge 1 onto the motor casing 2. Place the entire motor casing on the container and secure with the locking strap.



Fig. 5

fig. 6

Mount the exhaust hose.



Fig. 6

Fig. 7

Attach the other end of the exhaust hose using a hose clamp and hose coupling .

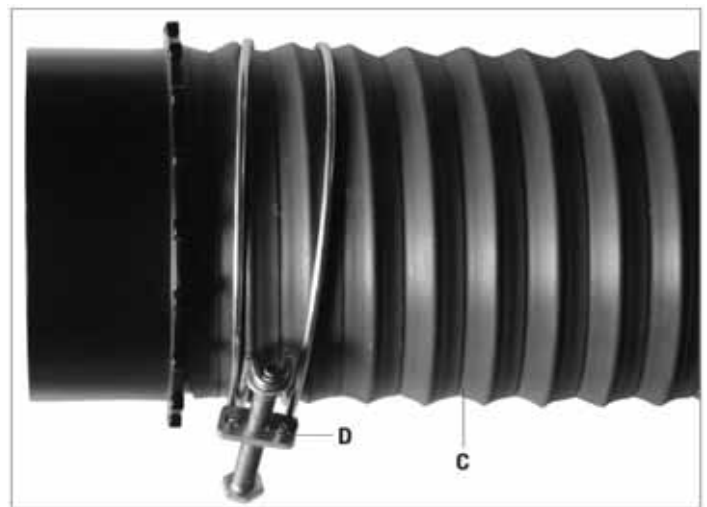


Fig. 7

Electrical Connection

- ◆ Connecting the electrical equipment, or any repair work, may only be carried out by a qualified electrician. The built-in electric motor is already connected and ready for operation. The connection to the mains supply made by the customer, as well as the extension cord used, must comply with these regulations.

- ◆ **Important Notes**

Faulty power cords

Power cords often suffer insulation damage.

Causes are:

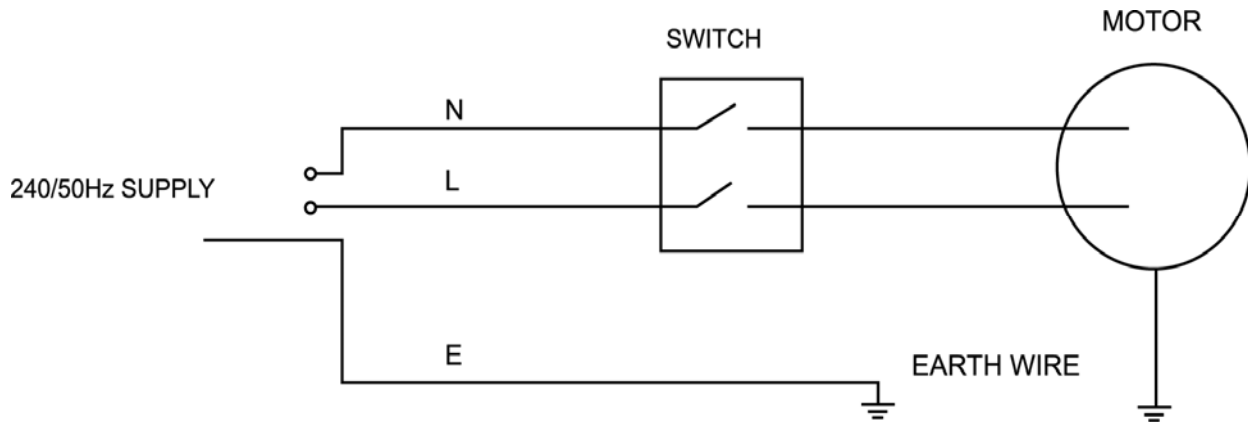
- | |
|---|
| ● Pinching when power cords are routed through windows or door cracks. |
| ● Bending due to improper attachment or routing of the power cords. |
| ● Cuts due to driving over the power cords. |
| ● Insulation damage caused by yanking the mains plug out of the power outlet. |
| ● Cracks in the insulation due to ageing. |

- ◆ **Such faulty power cords must not be used and are a danger to life because of the damaged insulation!**

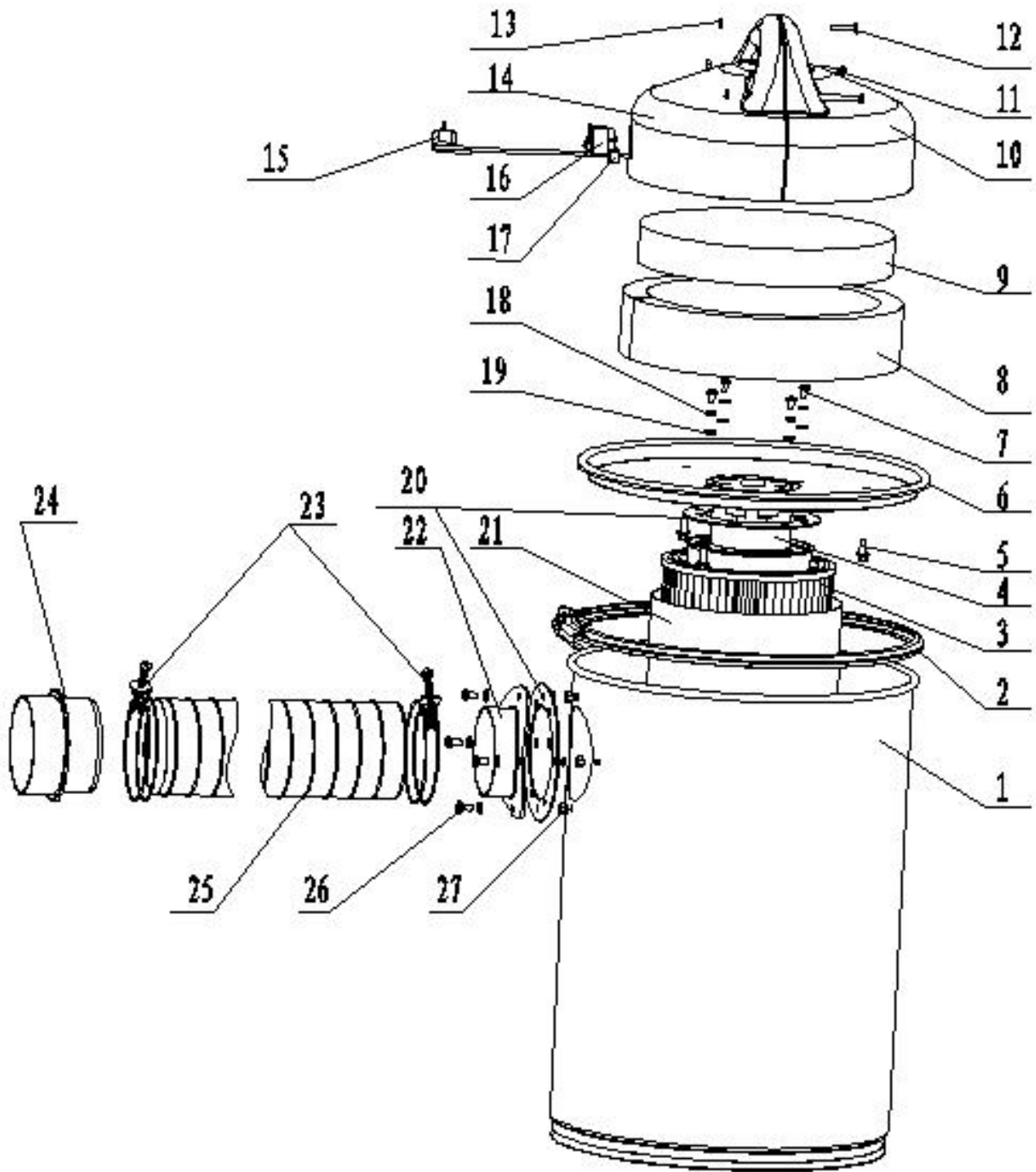
Inspect the power cords for damage on a regular basis. Make sure that during this inspection the power cord is not connected to the mains supply.

AC Motor

- ◆ The power supply must be 240 V/ 50 Hz.
- ◆ The connection to the power supply must be protected with a 16 A (delayed-action) fuse/ circuit breaker.



Parts' Diagram



Parts' List

ITEM	NAME	QTY
1	Shavings container	1
2	Locking strap	1
3	Cartridge filter	1
4	Motor	1
5	Screw ST5.5X15	3
6	Container lid	1
7	Screw M5x10	4
8	long sponge	3
9	round sponge	1
10	Right motor casing	1
11	Screw M5x45	1
12	Screw M5x25	3
13	M5 nut (black)	3
14	Left motor casing	1
15	Cable	1
16	On/off switch	4
17	Cable gland	4
18	Ø5 Spring washer	12
19	Ø5 washer	1
20	Rubber cushion	2
21	Filter bag	2
22	Hose coupling 1	1
23	Hose clamps	2
24	Hose coupling 2	4
25	Exhaust hose	4
26	Screw M5x12	
27	M5 nut (white)	